

GENERAL SPECIFICATIONS:

GENERAL SPECIFICATIONS:

- ① INSTALL A LOCKABLE FUSE DISCONNECT IN THE MACHINE ROOM TO ISOLATE THE ELECTRIC CONTROLLER
110 VAC/1/2 HP/15AMP/MONOPHASE BY OTHERS
- ② INSTALL A LIGHT 110V/100 WATT IN THE MACHINE ROOM (50 Lx MIN.)
- ③ ELECTRIC CONTROLLER FOR THE PLATFORM CSA-LR 107643-1

INSTALL A DOOR WITH A LOCK TO LIMIT ACCESS TO THE MACHINE ROOM THE DOOR MUST ALWAYS BE LOCKED AND EQUIPPED WITH A DOOR CLOSER BY OTHERS

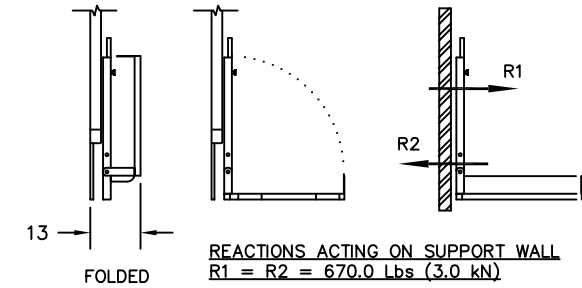
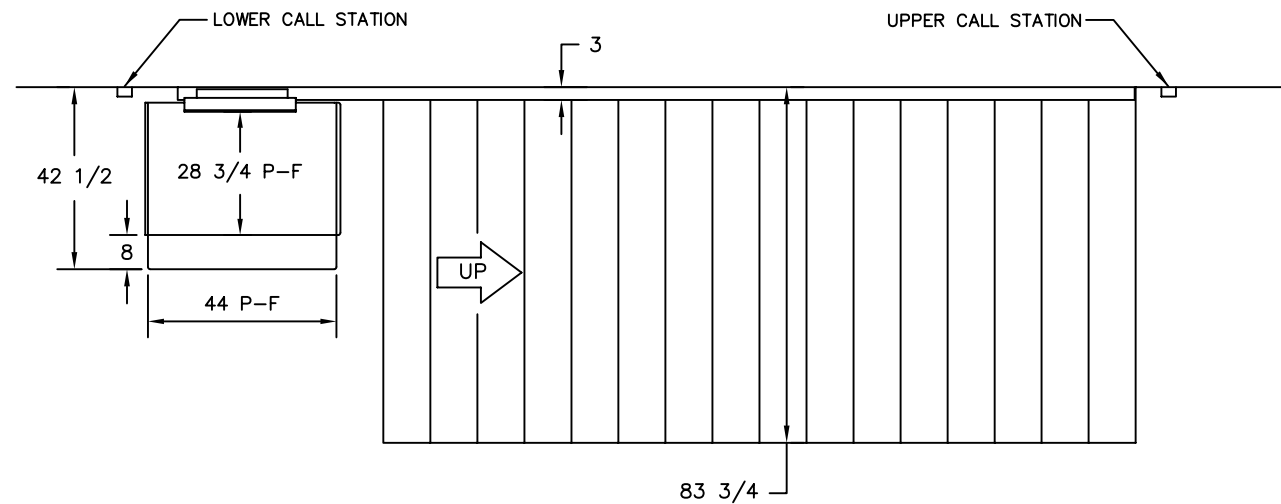
- ④ **MOTOR BRACKET ANCHORAGE:**
6X SLEEVE ANCHORS 1/2-3.0" FOR CONCRETE FLOOR
MAX. TORQUE: 22-28 Ft-Lbs.
MIN. HOLE DEPTH: 1.625"
2000 psi CONCRETE FLOOR MIN. REQ'D

SITE CONDITIONS TO DETERMINE EXACT MOTOR ASSEMBLY LOCATION

DEFLECTING PULLEY ANCHORAGE
CONCRETE: 4 X SLEEVE ANCHOR 3/8-3"
WOODS: 4 THROUGH BOLTS 1/4" DIA. GRADE 5

FORCE TRANSFERED ON ANCHOR POINT= 800 LBS
ADEQUATE STRUCTURAL SUPPORT TO BE PROVIDED

- ⑤ THIS EQUIPMENT MUST BE INSTALLED IN COMPLIANCE WITH THE CSA B355-94 CODE BY QUALIFIED TECHNICIANS ONLY.



STAIRWAY PLATFORM LIFT MODEL ES-125P
ACCESS TO PLATFORM: 90° ACCESS
ANGLE OF STAIRCASE: 32.7°
WIDTH OF STAIRCASE: 83 3/4"
LENGTH OF STAIRWAY: 222"
HEIGHT OF STAIRWAY: 120"
NUMBER OF RISERS: 17
NUMBER OF RAIL: 2

OPTIONS: SPLIT RAIL
ADDITIONAL DEFLECTORS (2)
POWIFOLD PLATFORM
ADDITIONAL RISERS (4)
ZERO CLEARANCE AT TOP LANDING
APPROVAL/PROPOSAL DRAWING

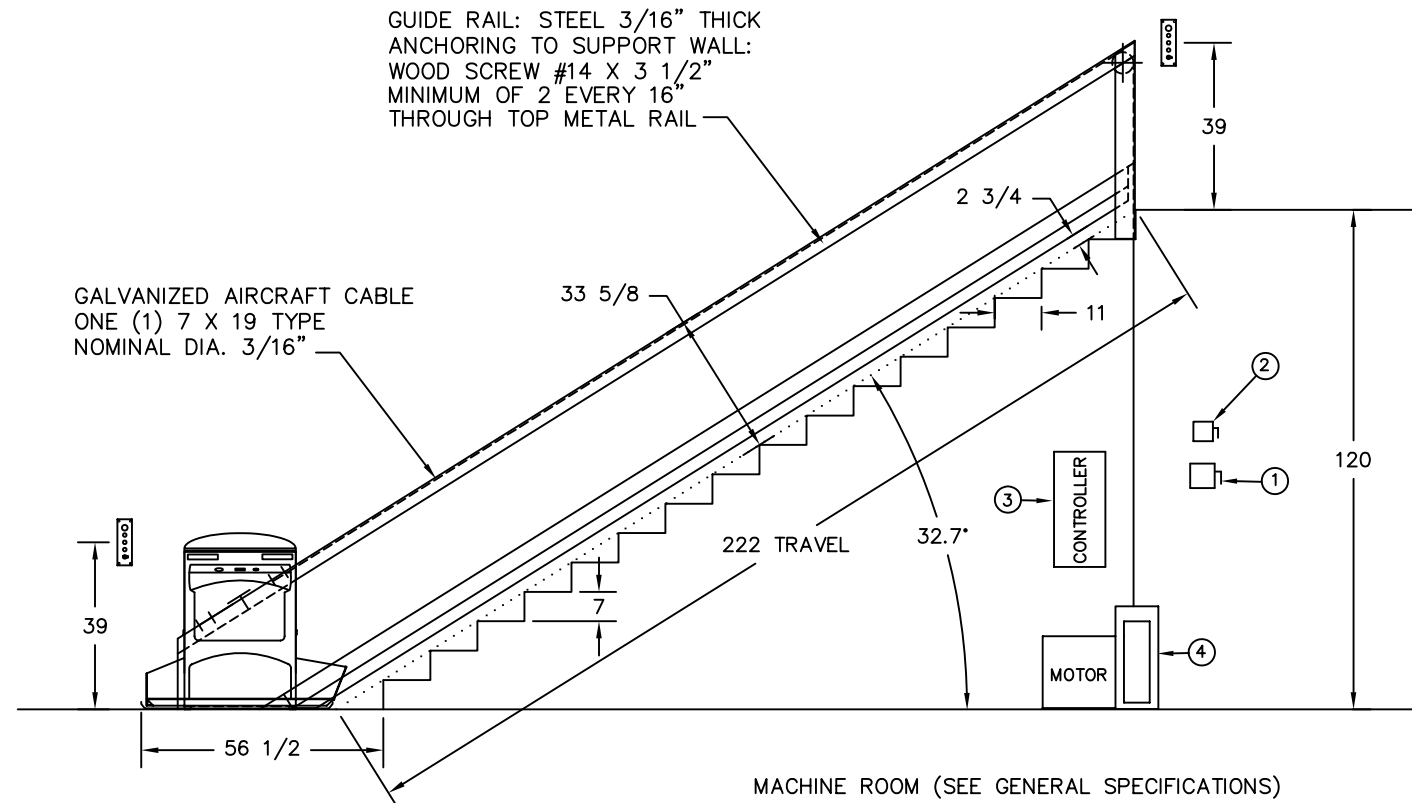
CUSTOMER: GOLD CARE

PROJECT: PARKLAND

- 1. RATED LOAD : 450 Lbs (204 kg)
- 2. CAPACITY : ONE PERSON IN WHEELCHAIR
- 3. RATED SPEED : 20 ft/min MAX. (0.10 m/s)
- 4. WEIGHT OF CAR : 195 Lbs
- 5. POWER SUPPLY : 110VAC/15A/1Ph/60hz
- 6. OPERATION : CONSTANT PRESSURE
- 7. PLATFORM SIZE: 28 3/4" X 44"
- 8. ELEVATING CLASS : UNENCLOSED STAIR PLATFORM LIFT
- 9. BEIGE COLOR STANDARD

PULL-OUT FORCE ON SUPPORT WALL IS APPROXIMATELY 670 LBS (3.0 kN). ADEQUATE STRUCTURAL SUPPORT TO BE PROVIDED AT THE TOP LANDING, THE BOTTOM LANDING, AND THROUGHOUT THE SUPPORTING WALL ALONG THE STAIRS.

AT ALL TIMES CLEARANCE OVER PLATFORM MUST BE AT LEAST 1.5m IN ORDER TO COMPLY WITH CSA B355.



MODEL: ES-125P QTY: 1

TOLERANCES IF NOT SPECIFIED:				
DEC: .030	ANG: 0.150°			
SCALE:	DRAWN BY:	NO.	REVISIONS	DATE
	P.DANILIDIS			
MATERIAL:	DATE:			
S\0	06/11/01			
DRAWING NO:	REV#	SHEET:	TITLE:	
6176PIGB	1		LIFT FOR HANDICAPPED	

THIS DRAWING SHOULD ONLY BE USED FOR REFERENCE PURPOSES

DIMENSIONS ARE IN INCHES