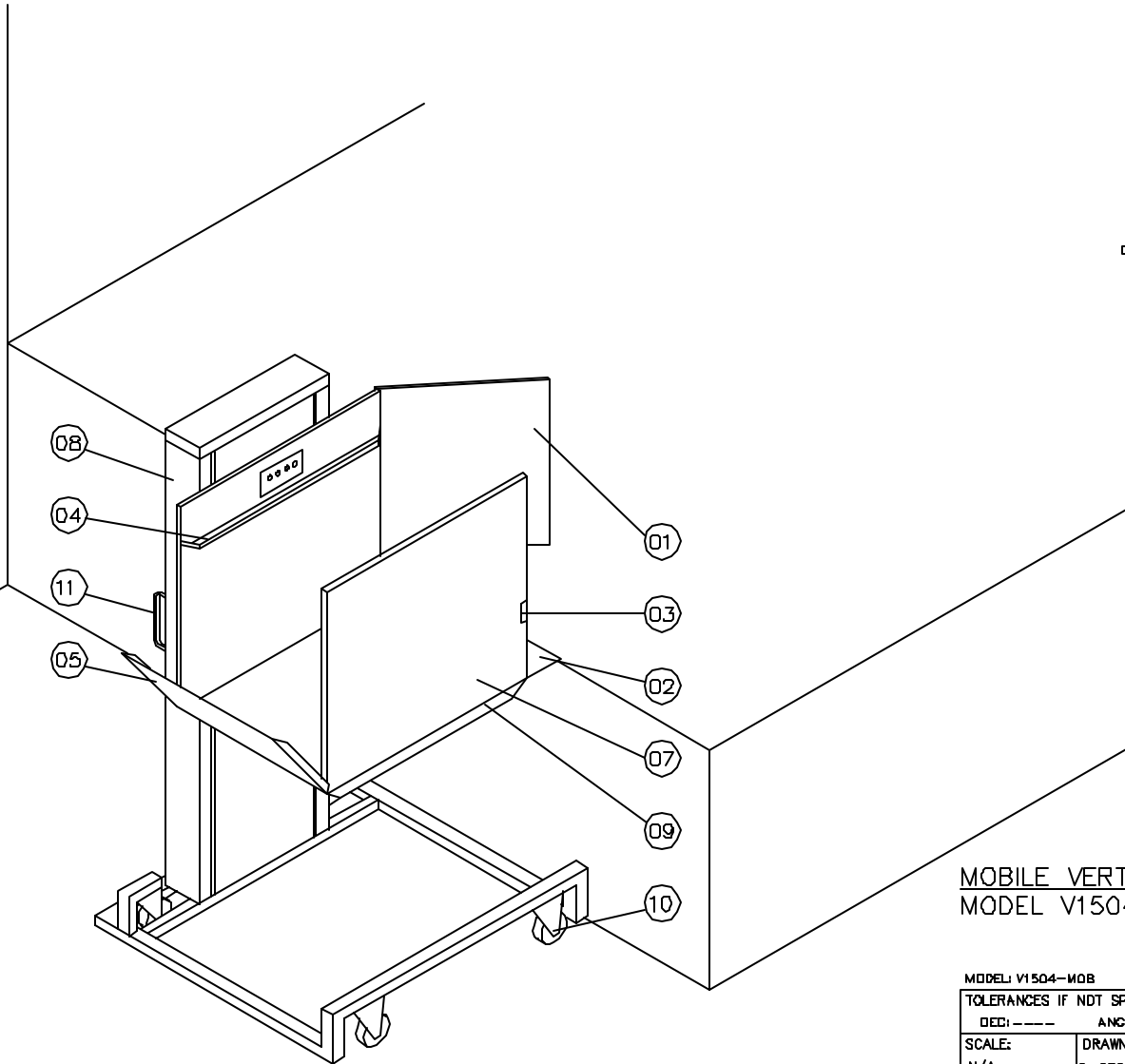
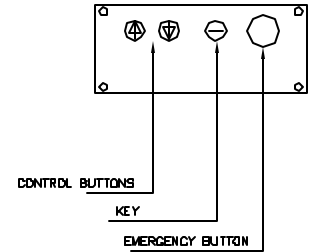


MOBILE LIFT FEATURES:

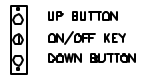
- ① TOP LANDING SIDE PLATFORM GATE
- ② AUTOMATIC BRIDGE PLATE
- ③ ELECTRIC STRIKE
- ④ HAND RAIL
- ⑤ AUTOMATIC SAFETY RAMP
- ⑥ SELF AJUSTING TOP LIMIT SWITCH
- ⑦ 34"x48" USEABLE PLATFORM
- ⑧ 750 LB CAPACITY
- ⑨ PLATFORM SAFETY UNDERPAN
- ⑩ PERMANENT WHEELS
- ⑪ MANIPULATING HANDLES




CAR STATION



LANDING STATIONS

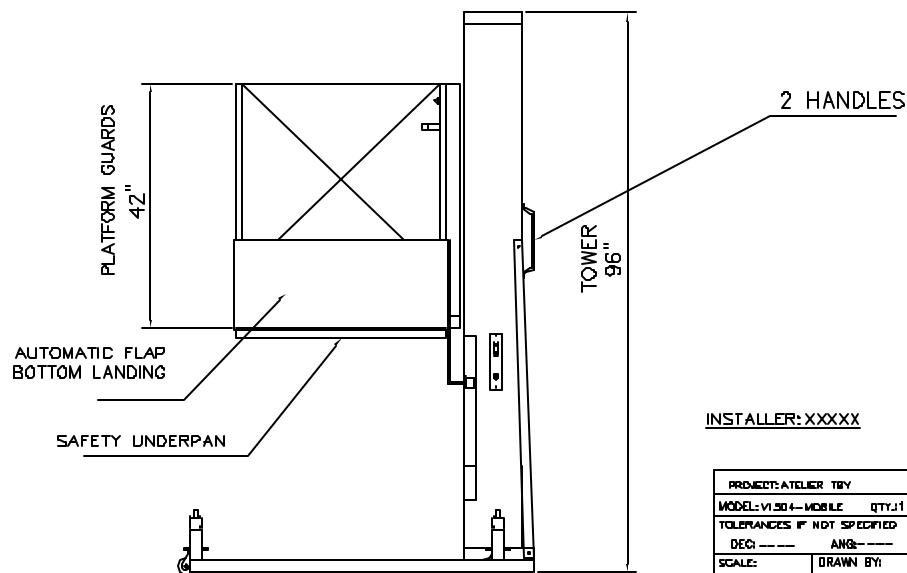
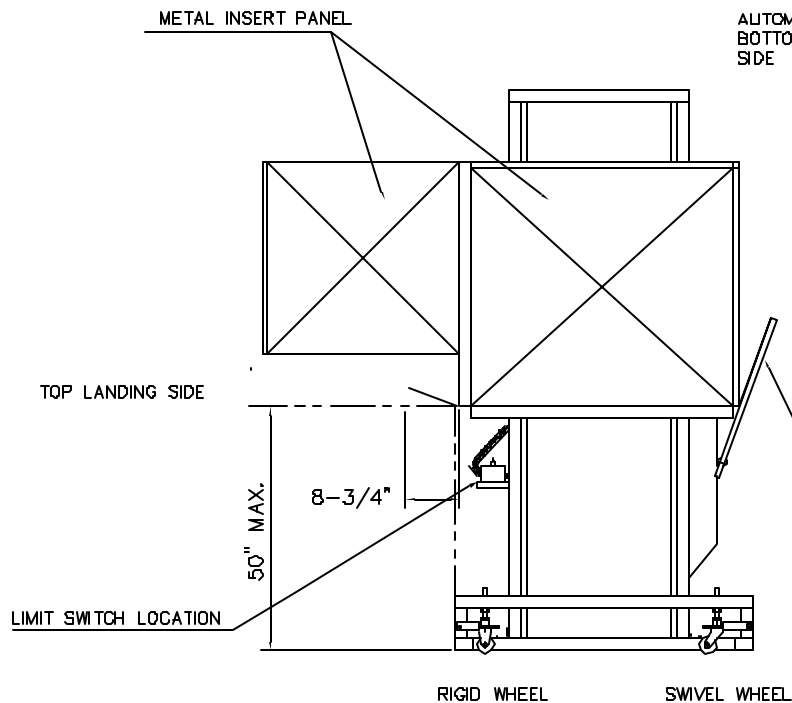
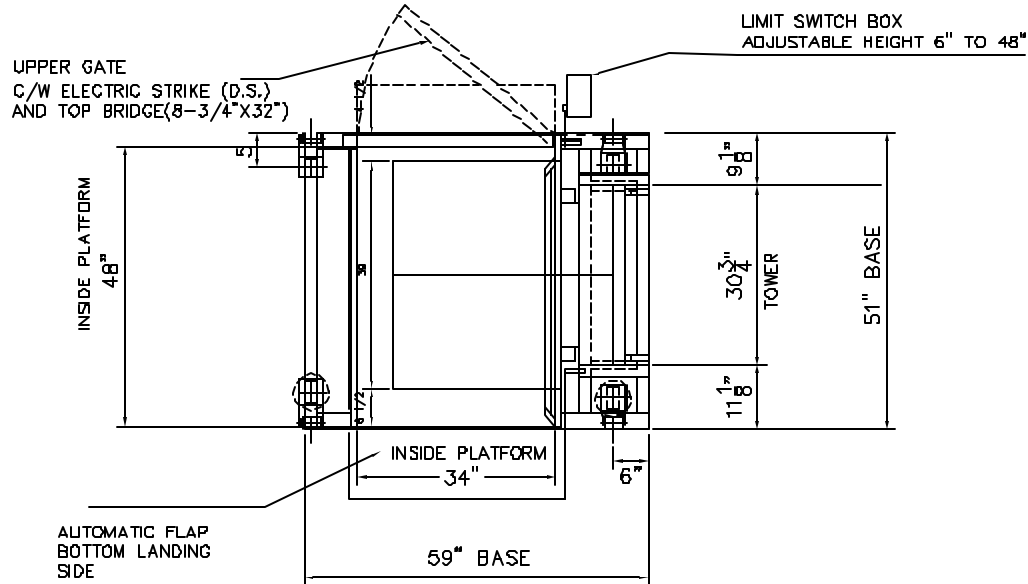


MOBILE VERTICAL WHEELCHAIR LIFT
MODEL V1504-MOB

MODEL: V1504-MOB		QTY: 1			
TOLERANCES IF NOT SPECIFIED:					
DEC: ---- ANG: ----					
SCALE:	DRAWN BY:	NO.	REVISIONS	DATE	
N/A	R. BERTHAUME				
MATERIAL:	DATE:	 SERVICES INDUSTRIELS SAVARIA INC.			
N/A	05-26-07				
DRAWING NO:	REV#	PAGE:	TITLE:		
MOB-ISO	0	1/1	MOBILE LIFT		

TOTAL TRAVEL: 50"
TOWER HEIGHT: 96"

IMPORTANT NOTICE:
UNIT TO BE LOWERED ON THE
GROUND BEFORE USE

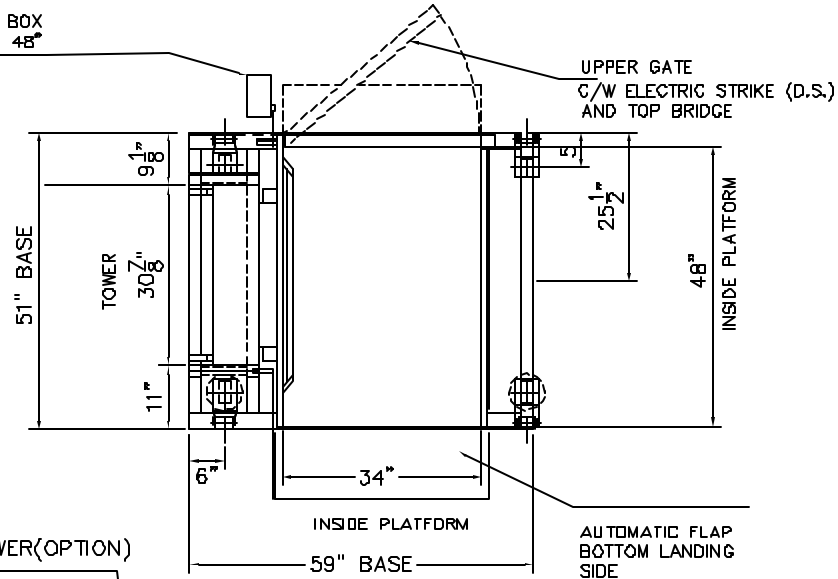


INSTALLER: XXXXX

PROJECT: ATELIER TRY				
MODEL: V1204-MOBILE QTY: 1				
TOLERANCES IF NOT SPECIFIED				
DEC: ---	ANG: ---			
SCALE: ---	DRAWN BY: ---	NO.	REVISIONS	DATE
NTS	ABOUCARD			
MATERIAL: ---	DATE: ---	 SERVICES INDUSTRIELS SAVARIA INC.		
DRAWING # XXXX-1	REV # 0			

LIMIT SWITCH BOX
ADJUSTABLE HEIGHT 6" TO 48"

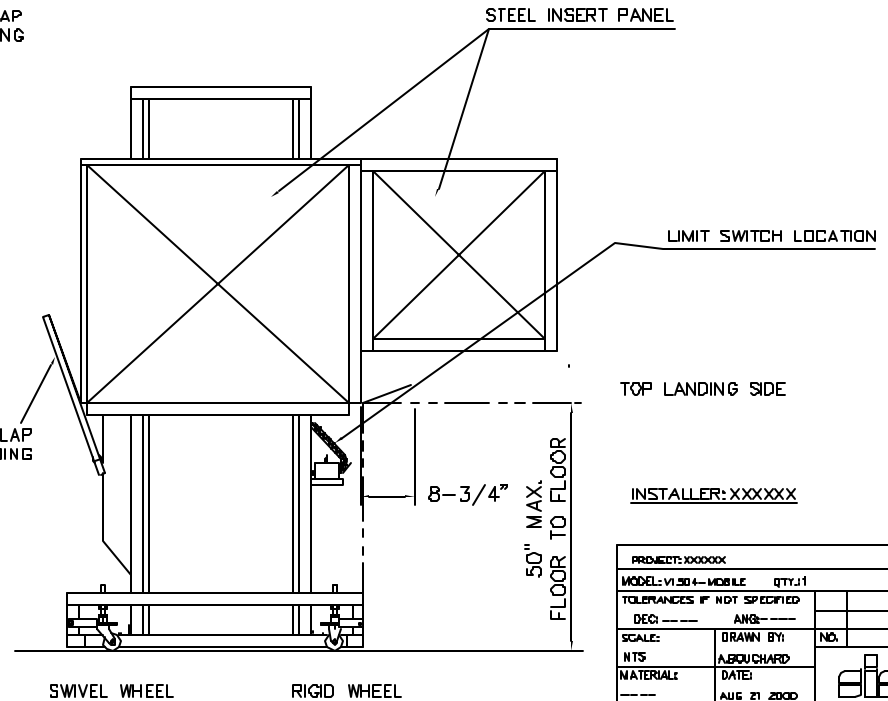
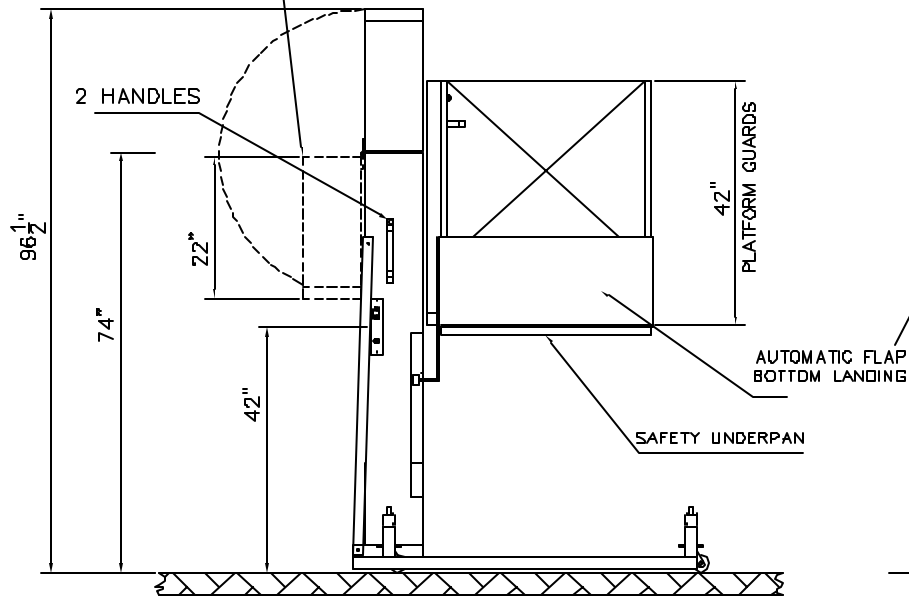
MOBILE V-1504 LEFT HAND
1 UNIT




TOTAL TRAVEL: 48"
TOWER HEIGHT: 96"

IMPORTANT NOTICE:
UNIT TO BE LOWERED ON THE
GROUND BEFORE USE

FLIPPING END TOWER(OPTION)



INSTALLER: XXXXXX

PROJECT: XXXXXX				
MODEL: V-1504-MOBILE QTY: 1				
TOLERANCES IF NOT SPECIFIED				
DEC: ---	ANG: ---			
SCALE: ---	DRAWN BY: ---	NO.	REVISIONS	DATE
NTS	ABOUCHARD			
MATERIAL: ---	DATE: ---	 SERVICES INDUSTRIELS SAVARIA INC.		
DRAWING # XXXX-1	REV # 0			